

Map Number	Route	Route Common Name	FROM	FROM Name	TO	To Name	Length	Width	Treatment	Map SY	Gal Seal	Markings Present
1	SR 1655	ACADEMY STREET	NC 66		EOM		1.22	18	Seal - Double and Fog Seal	12,883	6,442	YES
2	SR 1661	OPAL DRIVE	NC 66		EOM		0.23	16	Seal - Double and Fog Seal	2,112	1,056	NO
3	SR 1662	SUNSET DRIVE	NC 66		EOM		0.20	18	Seal - Double and Fog Seal	2,112	1,056	NO
4	SR 1664	CROSS BAPTIST CHURCH	EOM		EOM		0.27	18	Seal - Double and Fog Seal	2,841	1,420	NO
5	SR 1665	WEBSTER STREET	NC 66		EOM		0.25	18	Seal - Double and Fog Seal	2,640	1,320	NO
6	SR 1805	TICKLE ROAD	NC 66		EOM		0.20	20	Seal - Double and Fog Seal	2,358	1,179	NO
7	SR 1818	CROSS BAPTIST CHURCH ROAD	NC 66		SR 1664	CROSS BAPTIST CHURCH	0.10	20	Seal - Double and Fog Seal	1,115	557	NO
8	SR 1895	OLD RICHMOND ROAD	SR 1620	TOBACCOVILLE ROAD	EOM		0.05	20	Seal - Double and Fog Seal	575	287	NO
9	SR 1907	CRESTBROOK ROAD	NC 65		EOM		0.85	20	Seal - Double and Fog Seal	9,997	4,998	NO
10	SR 1908	MCGEE ROAD	NC 65		EOM		0.28	20	Seal - Double and Fog Seal	3,309	1,654	NO
11	SR 1909	SIMMONS ROAD	SR 1655	ACADEMY STREET	EOM		0.99	20	Seal - Double and Fog Seal	11,663	5,831	NO
12	SR 1910	STOLTZ STREET	NC 66		EOM		0.23	20	Seal - Double and Fog Seal	2,746	1,373	NO
13	SR 1911	THACKER ROAD	NC 66		EOM		0.50	20	Seal - Double and Fog Seal	5,843	2,922	NO
14	SR 1921	BRAY STREET	NC 66		EOM		0.31	20	Seal - Double and Fog Seal	3,637	1,819	NO
15	SR 1922	SHERRI LYNN DRIVE	NC 66		EOM		0.10	20	Seal - Double and Fog Seal	1,209	604	NO
16	SR 1923	NORMAN DRIVE	NC 66		EOM		0.20	20	Seal - Double and Fog Seal	2,394	1,197	NO
17	SR 1924	BELLE AVENUE	SR 1925	PHELPS CIRCLE	NC 66		0.47	20	Seal - Double and Fog Seal	5,515	2,757	NO
18	SR 1925	PHELPS CIRCLE	NC 66		NC 66		0.76	20	Seal - Double and Fog Seal	8,870	4,435	NO
19	SR 1926	GIDEON STREET	SR 1925	PHELPS CIRCLE	SR 1924	BELLE AVENUE	0.09	20	Seal - Double and Fog Seal	1,068	534	NO
20	SR 1927	CANNOY STREET	NC 66		SR 1924	BELLE AVENUE	0.09	20	Seal - Double and Fog Seal	1,103	551	NO
21	SR 1928	WHITE OAK DRIVE	NC 66		EOM		0.10	20	Seal - Double and Fog Seal	1,126	563	NO
22	SR 1930	SANDHILL DRIVE	NC 66		EOM		0.38	20	Seal - Double and Fog Seal	4,482	2,241	NO
23	SR 1936	BONNE VENTURE ROAD	NC 66		EOM		0.21	18	Seal - Double and Fog Seal	2,196	1,098	NO
24	SR 2066	LOCHINVAR DRIVE	SR 1921	BRAY STREET	EOM		0.20	20	Seal - Double and Fog Seal	2,382	1,191	NO
25	SR 2072	HOLMES DRIVE	SR 1910	STOLTZ STREET	EOM		0.29	20	Seal - Double and Fog Seal	3,403	1,701	NO
26	SR 2073	BLENHEIM COURT	SR 2072	HOLMES DRIVE	EOM		0.14	20	Seal - Double and Fog Seal	1,666	833	NO
27	SR 2141	MEADOWDALE DRIVE	NC 8		EOM		0.39	20	Seal - Double and Fog Seal	4,541	2,270	NO
28	SR 2142	PEBBLEBROOK ROAD	NC 8		EOM		0.54	20	Seal - Double and Fog Seal	6,371	3,186	NO
29	SR 2143	WOODMONT COURT	SR 2142	PEBBLEBROOK ROAD	EOM		0.05	20	Seal - Double and Fog Seal	587	293	NO
30	SR 2145	STONEBROOK CIRCLE	EOM		EOM		0.10	20	Seal - Double and Fog Seal	1,115	557	NO
31	SR 2146	SPRUCEPINE DRIVE	EOM		EOM		0.21	20	Seal - Double and Fog Seal	2,464	1,232	NO
32	SR 2147	YARDLEY TERRACE	SR 2146	SPRUCEPINE DRIVE	EOM		0.06	20	Seal - Double and Fog Seal	704	352	NO
33	SR 2148	ROLLINGWOOD CIRCLE (WEST)	EOM		EOM		0.15	20	Seal - Double and Fog Seal	1,760	880	NO
34	SR 2170	WALLASEY ROAD	NC 66		EOM		0.10	18	Seal - Double and Fog Seal	1,056	528	NO
35	SR 2171	GRADE STREET	NC 8		EOM		0.14	20	Seal - Double and Fog Seal	1,631	815	NO
36	SR 2175	SHELLHABOUR BOULEVARD	SR 1920	STANLEYVILLE DRIVE	SR 4426	ARMINDALE AVENUE	0.61	20	Seal - Double and Fog Seal	7,157	3,579	NO
37	SR 2176	LAVERTON LANE	SR 1920	STANLEYVILLE DRIVE	SR 4426	ARMINDALE AVENUE	0.55	20	Seal - Double and Fog Seal	6,453	3,227	NO
38	SR 2177	WYNYARD AVENUE	SR 2175	SHELLHABOUR BOULEVARD	EOM		0.21	20	Seal - Double and Fog Seal	2,464	1,232	NO
39	SR 2178	BUNDABERA LANE	SR 2177	WYNYARD AVENUE	SR 4426	ARMINDALE AVENUE	0.34	20	Seal - Double and Fog Seal	3,989	1,995	NO
40	SR 2190	CANBERRA AVE	SR 2178	BUNDABERA LANE	SR 2175	SHELLHABOUR BOULEVARD	0.23	20	Seal - Double and Fog Seal	2,699	1,349	NO
41	SR 2471	MELVIN LANE	NC 66		EOM		0.22	20	Seal - Double and Fog Seal	2,546	1,273	NO
42	SR 3997	JOYNER CIRCLE	SR 1664	BAKER STREET	EOM		0.16	20	Seal - Double and Fog Seal	1,877	939	NO
43	SR 4411	CREEDMORE DRIVE	SR 1655	ACADEMY STREET	EOM		1.40	20	Seal - Double and Fog Seal	16,427	8,213	NO
44	SR 4426	ARMINDALE AVENUE	SR 2178	BUNDABERA LANE	EOM		0.32	20	Seal - Double and Fog Seal	3,755	1,877	NO
45	SR 4462	HELENA COURT	SR 1911	THACKER ROAD	EOM		0.13	20	Seal - Double and Fog Seal	1,525	763	NO
46	SR 4468	DE VAUX ROAD	SR 1908	MCGEE ROAD	EOM		0.21	18	Seal - Double and Fog Seal	2,175	1,088	NO

Map Number	Route	Route Common Name	FROM	FROM Name	TO	To Name	Length	Width	Treatment	Map SY	Gal Seal	Markings Present
47	SR 4499	CREEDMORE COURT	SR 4411	CREEDMORE DRIVE	EOM		0.12	20	Seal - Double and Fog Seal	1,408	704	NO
48	SR 4500	BISHOPS RIDGE LANE	SR 4411	CREEDMORE DRIVE	EOM		0.14	20	Seal - Double and Fog Seal	1,643	821	NO

Maps with Pavement Markings

1 Maps
1.22 mi. with Markings

Totals

Total Map Length 15.09 mi.
Seal - Double and Fog Seal 173,591 SY

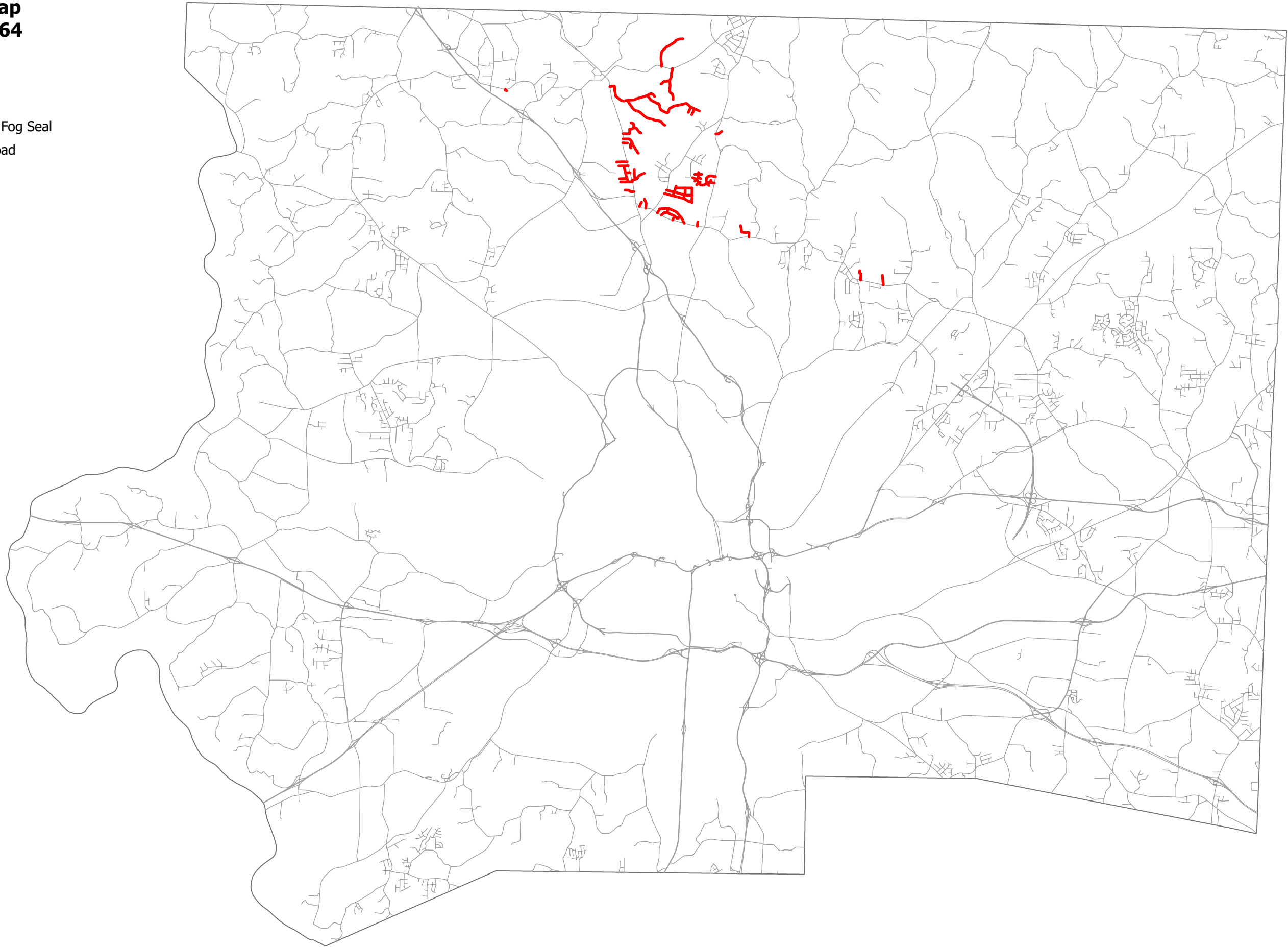
Liquid AC	Rate	Total
Seal - Double and Fog Seal	0.50 Gal / SY	86,796 Gal.

**Forsyth County
AST Contract Map
Contract DI00264**

Legend

Treatment

- Seal - Double and Fog Seal
- NCDOT System Road

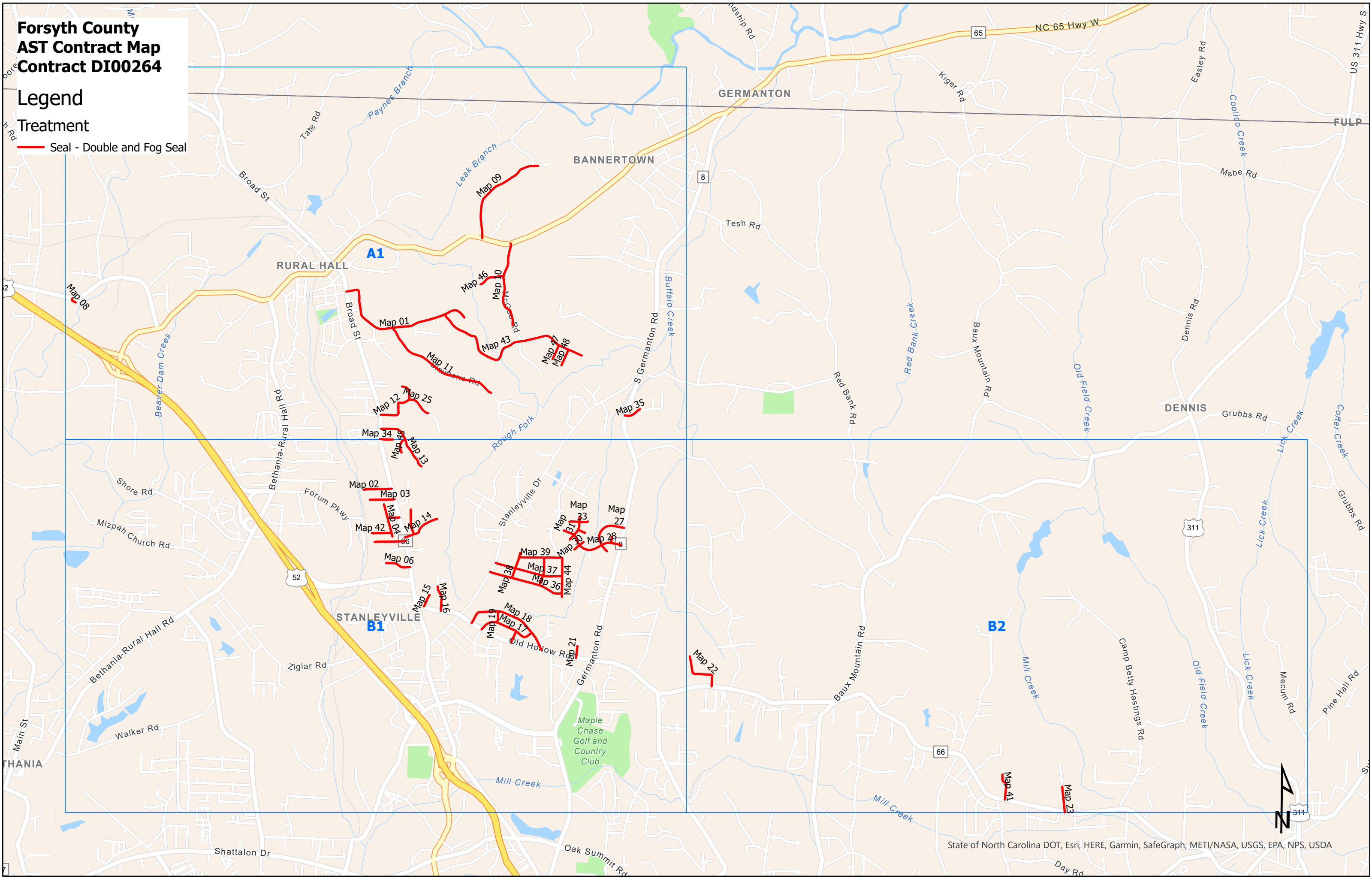


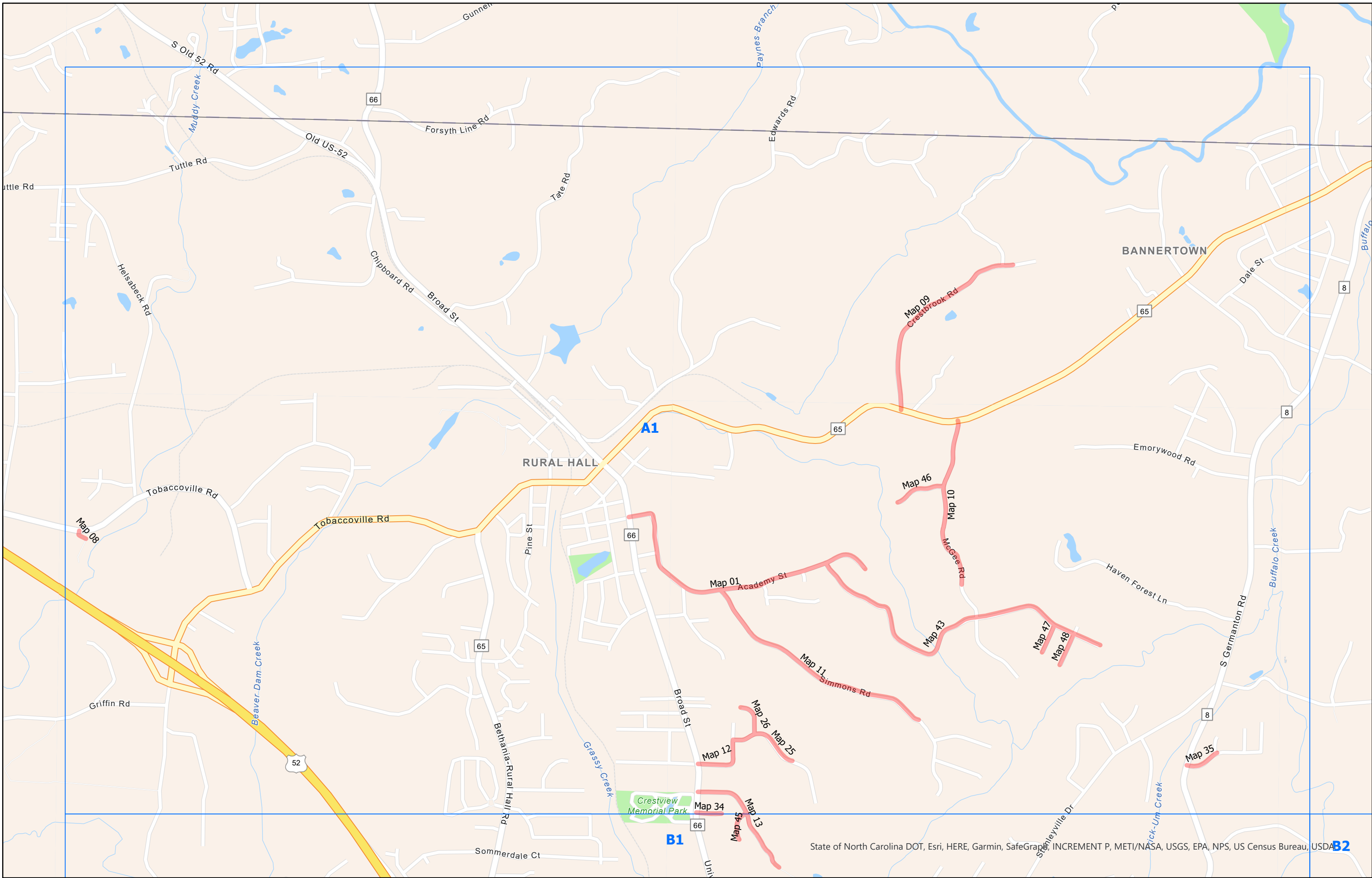
**Forsyth County
AST Contract Map
Contract DI00264**

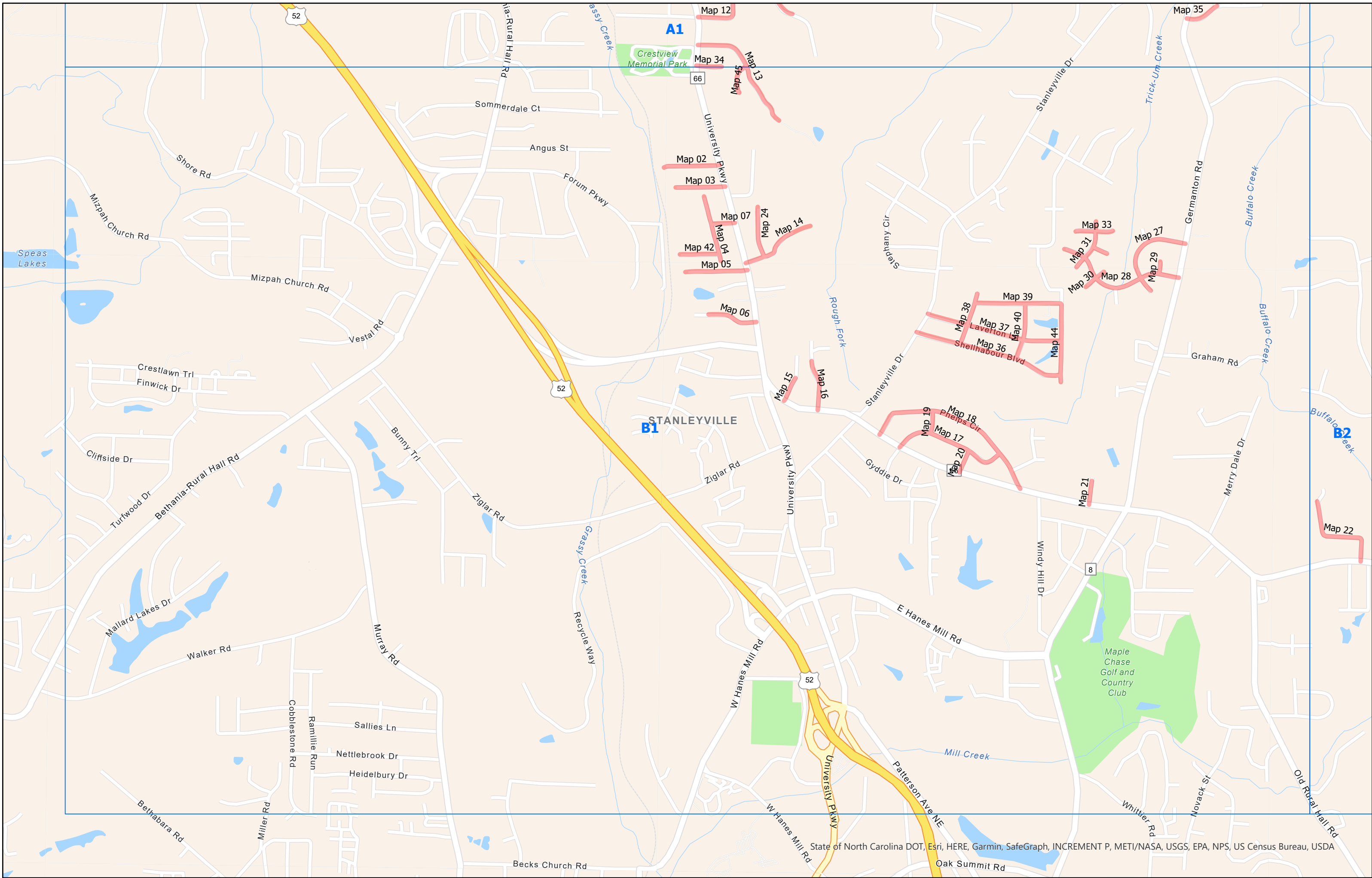
Legend

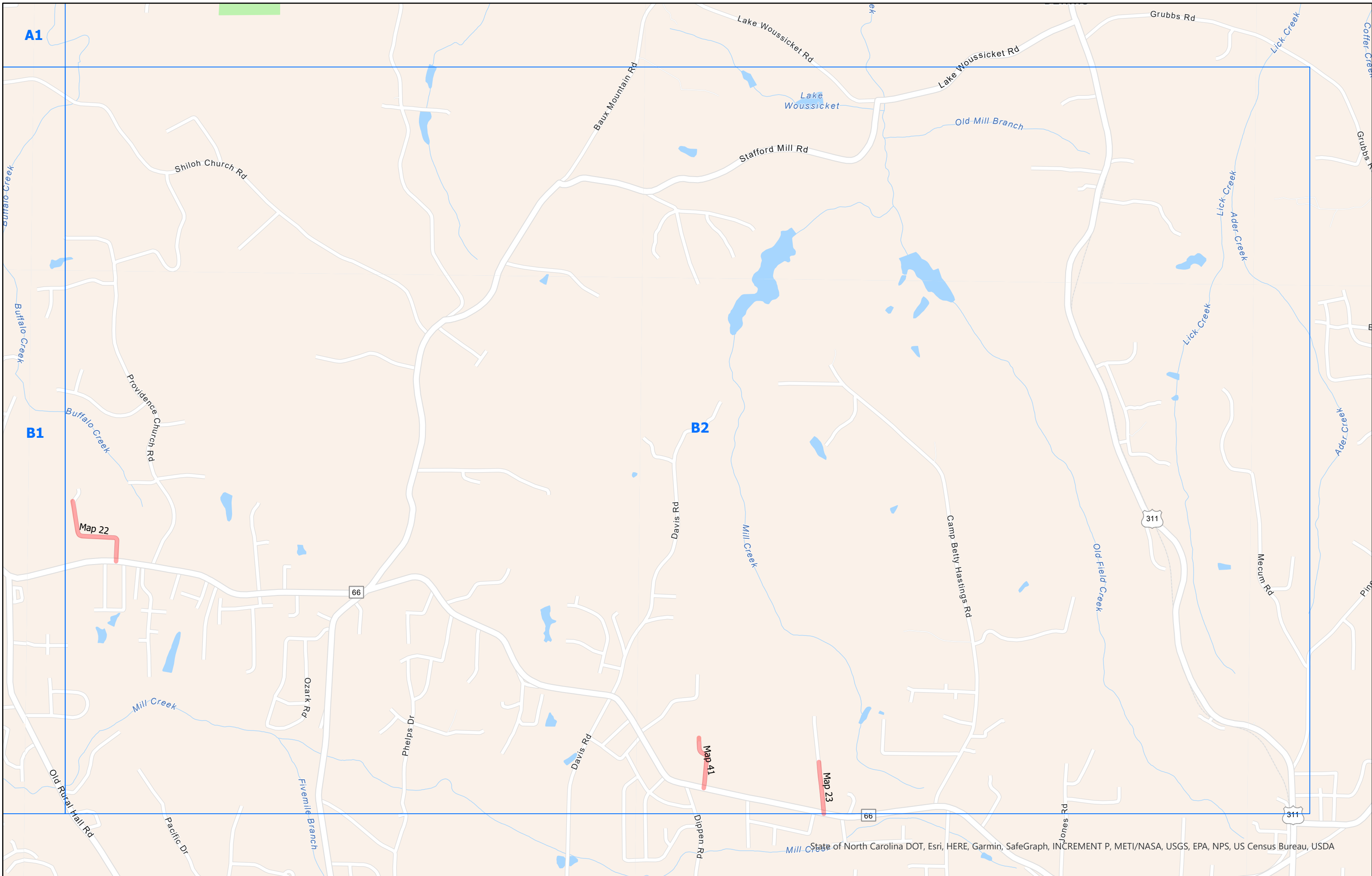
Treatment

— Seal - Double and Fog Seal



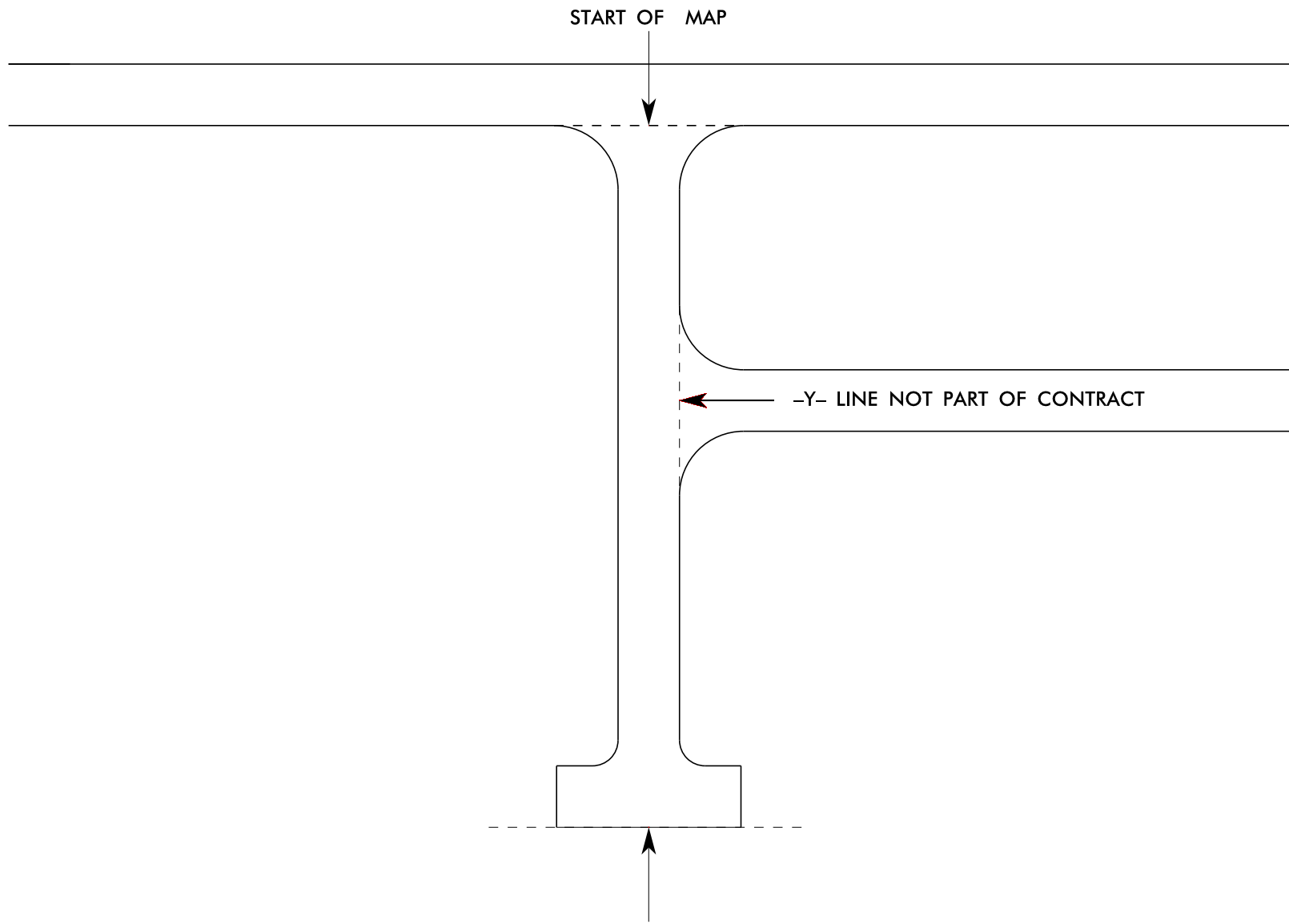






PROJECT REFERENCE NO.

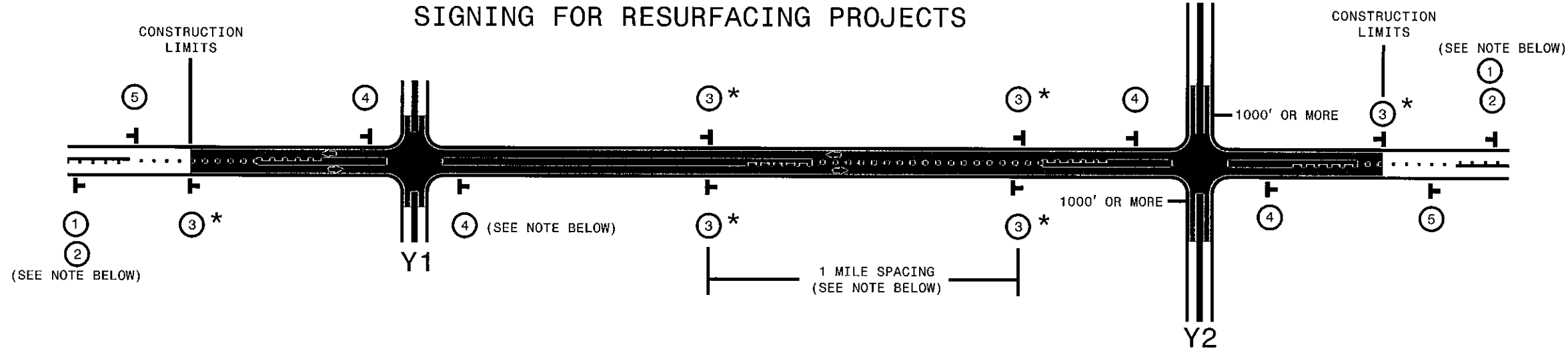
SHEET NO.



Y-LINE TIE IN DETAIL

THE PROJECT PLANS DENOTE ALL ROAD TERMINUS AS END OF MAINTENANCE: THIS IS INTENDED TO DESCRIBE ANY TYPE GEOMETRY THAT MAY EXIST, INCLUDING CUL-DE-SAC, T-TURN, L-TURN, TRANSITION TO UNPAVED, TRANSITION TO PRIVATE ROAD, ETC.

SIGNING FOR RESURFACING PROJECTS



LEGEND	
	PORTABLE WORK ZONE SIGN (1110.02)
	DIRECTION OF TRAFFIC FLOW

MAINLINE (-L-) SIGNING

-Y- LINE SIGNING

SIGNING NOTES AND PLACEMENT PER DIRECTION	 	<p>PLACE 1000' PRIOR TO BEGINNING OF CONSTRUCTION LIMITS. ONLY USED ON -Y- LINES IF RESURFACING LIMITS EXTEND 1000' ALONG -Y- LINE.</p> <p>#2 SIGN ONLY USED WHEN RESURFACING LIMITS ARE 2 OR MORE MILES IN LENGTH. ROUND UP TO NEXT WHOLE NUMBER. (NO FRACTIONAL OR DECIMAL NUMBERS)</p>	<p>NO REQUIRED STATIONARY SIGNING FOR THE FOLLOWING -Y- LINE CONDITIONS:</p> <ol style="list-style-type: none"> 1) LESS THAN 1000' OF RESURFACING ALONG -Y- LINE 2) SUBDIVISION ROADS 3) DEAD END ROADS <p>WHEN PAVING/CONSTRUCTION ACTIVITIES PROCEED ACROSS AN UNSIGNED -Y- LINE, ADVANCE WARNING PORTABLE SIGNS SHALL BE USED ALONG THE -Y- LINE AS SHOWN BELOW. REMOVE UPON COMPLETION OF WORK.</p> <div style="display: flex; justify-content: space-around;"> <div style="text-align: center;"> <small>W20-1 48" X 48"</small> </div> <div style="text-align: center;"> <small>W20-7 A 48" X 48"</small> </div> </div> <p>PLACED 500' IN ADVANCE OF FLAGGER. PLACED 250' IN ADVANCE OF FLAGGER.</p>
		<p>PLACE INITIALLY AT THE CONSTRUCTION LIMITS AND SPACE 1 MILE APART THEREAFTER. IF NO -Y- LINES EXIST, PLACE 2ND SET 1/2 MILE FROM THE CONSTRUCTION LIMITS AND THEN SPACE 1 MILE THEREAFTER.</p> <p>STANDARD DRAWING 1110.01 STATIONARY WORK ZONE SIGNS</p>	
		<ul style="list-style-type: none"> - THESE ARE FOR -Y- LINES THAT ARE "THROUGH" ROADWAYS. - DEAD END AND SUBDIVISION ROADS ARE NOT "THROUGH" ROADWAYS. - INSTALL 500' +/- FROM EACH -Y- LINE APPROACH AS SHOWN ABOVE. - FOR MULTIPLE -Y- LINES THAT ARE SEPARATED BY 0.25 MILES OR LESS, TREAT AS A SINGLE UNIT AND INSTALL WITHIN 500' OF EACH APPROACH. - A MAXIMUM OF 2 SIGN SETS PER MILE. DO NOT INSTALL WHEN -Y- LINES ARE WITHIN 0.5 MILES FROM "END ROAD WORK" SIGN. 	
		<p>PLACE 500' FOLLOWING THE END OF CONSTRUCTION LIMITS OR AS SHOWN WHEN WORK ENDS AT A 3-WAY TEE INTERSECTION. (OPTIONAL)</p>	

* SIGNING FOR ASPHALT SURFACE3 TREATMENTS (ONLY)

SUBSTITUTE LOW/SOFT SHOULDER SIGNS BY ALTERNATING THE FOLLOWING TWO SIGNS: STARTING WITH "UNMARKED PAVEMENT AHEAD" (SP 06026) FOLLOWED BY "LOOSE GRAVEL" (W8-7)

STANDARD DRAWING 1110.01 STATIONARY WORK ZONE SIGNS



RESURFACING ADVANCE WARNING SIGNS FOR RURAL AND SUBURBAN 2 LANE ROADWAYS

SYSTEMTIME:#####
 USERNAME:#####